



EDGARTOWN RACE WEEKEND

'ROUND-THE-SOUND RACE

July 27, 2019

SAILING INSTRUCTIONS

Addendum #1

Course Option #1: Total distance: 21.0 nm

Start line formed by Committee Boat and Green "3" (Edgartown Outer Harbor)

Leave to port, Green "9" (Eldridge Shoal, ~22°T, 7.2 nm from "3")

Leave to port, Green "15" (Western Edge of Bardow Shoal, ~264°T, 7.4 nm from "9")

Finish line formed by leaving Red "2" to port within 100 yards (or Committee Boat if on station)
(Edgartown Outer Harbor, ~143°T, 6.4 nm from "15")



Course Option #2: Total distance: 20.0 nm

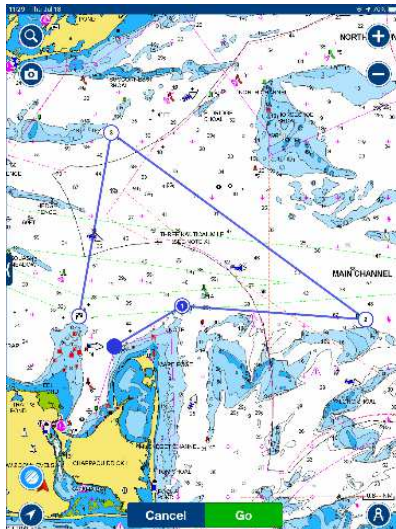
Start line formed by Committee Boat and Green “3” (Edgartown Outer Harbor)

Leave to starboard, Yellow Inflatable Mark at ~41-26.4N 070-26.2W (~59°T, 2.1 nm from “3”)

Leave to port, Green “5” (vicinity of Edwards Shoal, ~94°T, 4.8 nm from “Yellow inflatable”)

Leave to port, Green “11” (Eastern Edge of Bardow Shoal, ~306°T, 8.3 nm from “5”)

Finish line formed by leaving Red “2” to port within 100 yards (or Committee Boat if on station) (Edgartown Outer Harbor, ~190°T, 4.9 nm from “11”)



Course Option #3: Total distance: 11.1 nm

Start line formed by Committee Boat and Green “3” (Edgartown Outer Harbor)

Leave to starboard, Yellow Inflatable Mark at ~41-26.4N 070-26.2W. (~59°T, 2.1 nm from “3”)

Leave to port, Green “21A” (NE of Cape Poge, ~60°T, .9 nm from “Yellow Inflatable”)

Leave to port, Red/Green “W” (Squash Meadow, ~281°T, 5.5 nm from “21A”)

Finish line formed by leaving Red “2” to port within 100 yards (or Committee Boat if on station) (Edgartown Outer Harbor, ~131°T, 2.7 nm from “W”)

